



HOME TO THE EPITOME OF



REATNESS



RAMA GROUP™

A JOURNEY OF PASSION, INNOVATION, AND EXCELLENCE.

With the focus on uncompromised quality, the brand has helped the dream of owning a lavish and comfortable home a reality for thousands of families.

Understanding that buying a home is an emotional decision, the brand approaches each project by adhering to the highest standards of construction and service delivery, ensuring that the customers feel heard and valued.

Their story is not just one of business successes but also of touching lives and creating homes that are filled with joy, love, and memories



WORLD TRADE CENTER
3 MINS

UPCOMING
PANCHSHIL IT PARK
5 MINS

PHOENIX MALL (WEST)
8 MINS

WAKAD METRO STATION
8 MINS

BALEWADI HIGHSTREET
12 MINS

UPCOMING NAVI MUMBAI
INTERNATIONAL AIRPORT
100 MINS

THE GREATEST LOCATION
OF PUNE WEST

GREATNESS IS CONTAGIOUS

AND ONCE SOMEONE ACHIEVES IT,
IT CREATES A WAVE THAT BUILDS ON ITSELF.



Representative image

When you rub shoulders with greatness it seeps
into you and echoes through space and time.

Which is why we say, greatness fuels greatness.

Which is why when we created a great history,
we knew the greatest was on its way!

OUR SUCCESS STORY SO FAR

Embarking on a journey like no other, G.O.A.T.'s first chapter set the stage for greatness. From the very outset, the G.O.A.T. carved a legacy that would stand the test of time. With unwavering commitment, it showcased unparalleled brilliance, leaving everyone in awe.

As we celebrate this awe-inspiring journey we invite you once again to embrace a lifestyle where every detail exudes sophistication and comfort, where every corner mirrors greatness.



Representative image

HOLD YOUR BREATH FOR G.O.A.T. 2.0

Now bigger, better, bolder.

Prepare to be enthralled as the icon makes an extraordinary comeback, igniting the world with unrivalled brilliance and leaving an indelible mark on the stage of greatness.

Embrace the grandeur of this momentous return, as the G.O.A.T. takes its place at the pinnacle, and redefines what it means to be legendary.



CODENAME

G.O.A.T.

GREATEST OF ALL TIME

2.0

A GLIMPSE OF THE
TOWERING GREATNESS

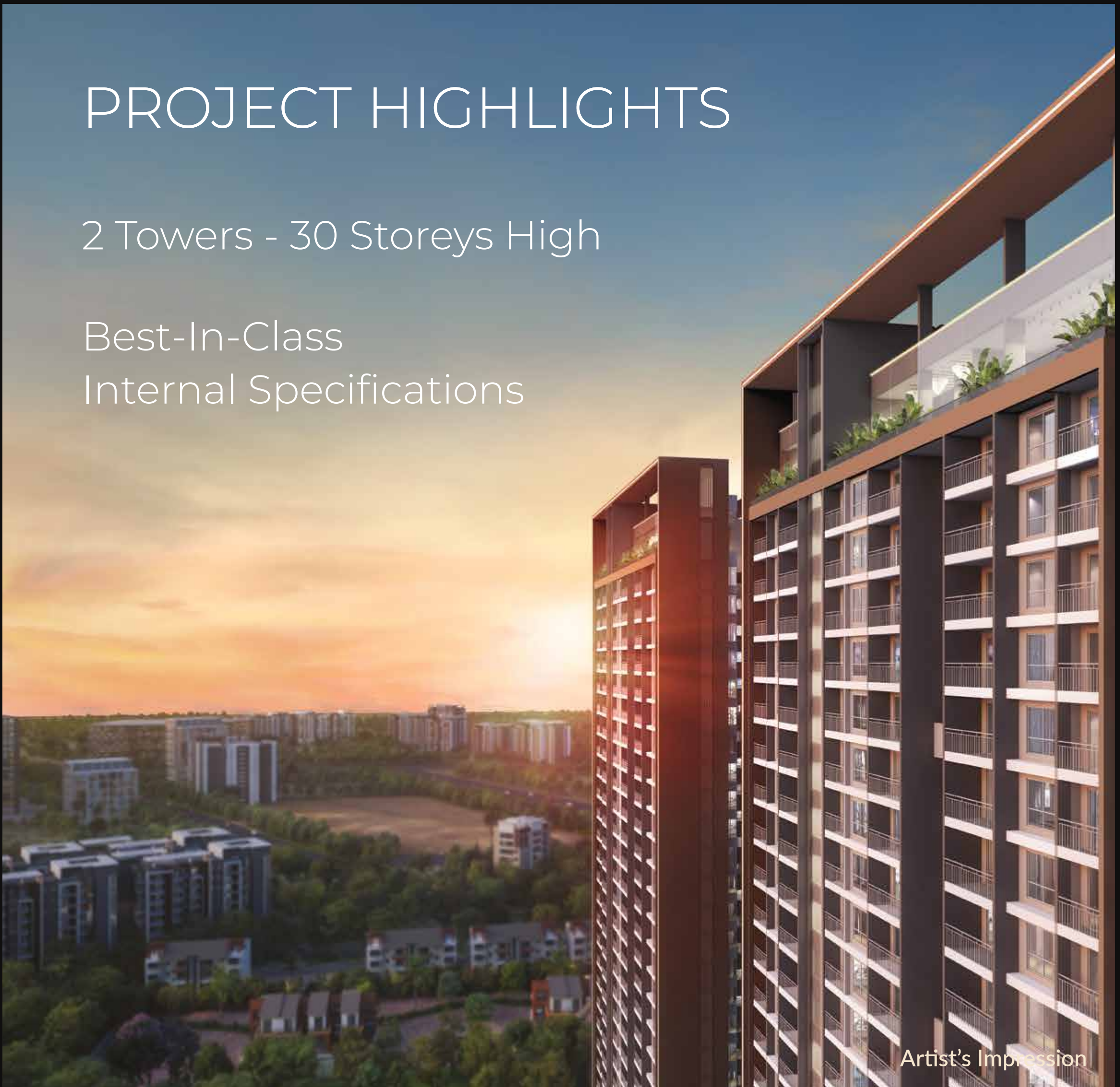


Artist's Impression

PROJECT HIGHLIGHTS

2 Towers - 30 Storeys High

Best-In-Class
Internal Specifications



Premium 3BHK and 4BHK Apartments
With Biggest Carpet Areas

Retail High Street With 150+ Showrooms and
Shops Within Project Premises



AMAZING AMENITIES FOR EVERY

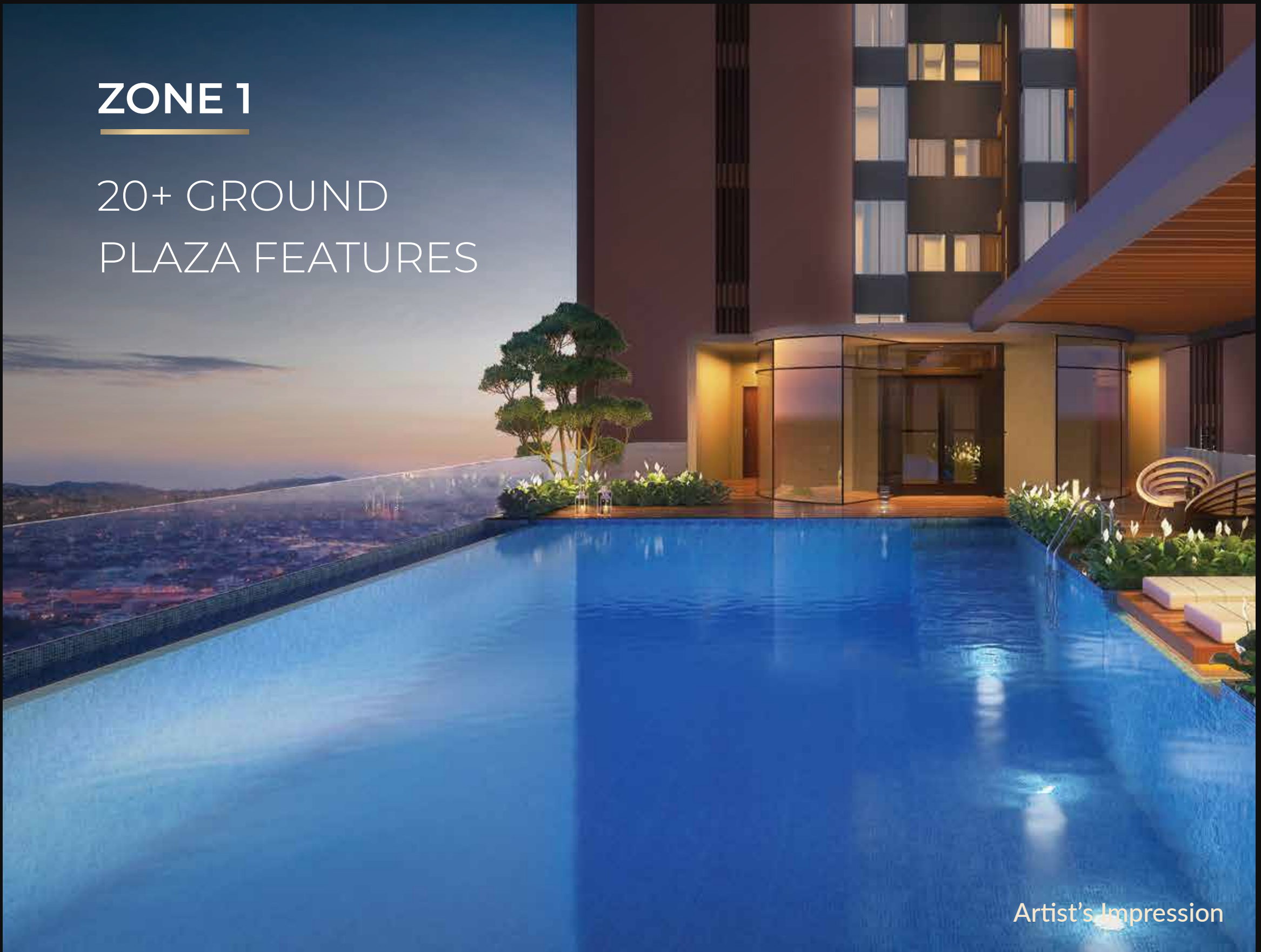
M M OOD



AMENITIES

ZONE 1

20+ GROUND
PLAZA FEATURES

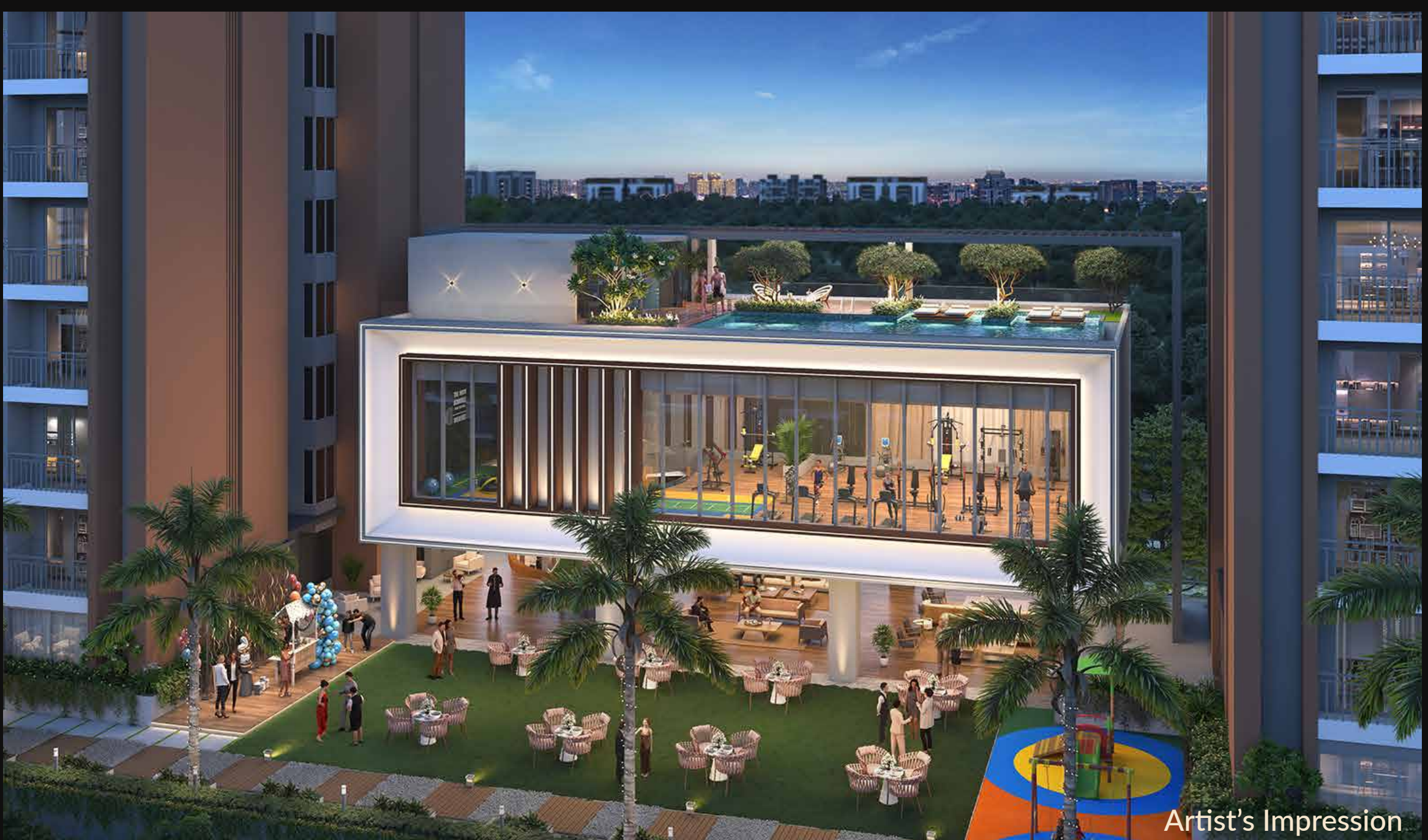


ZONE 2

20+ CLUB HOUSE AND
PODIUM AMENITIES

ZONE 3

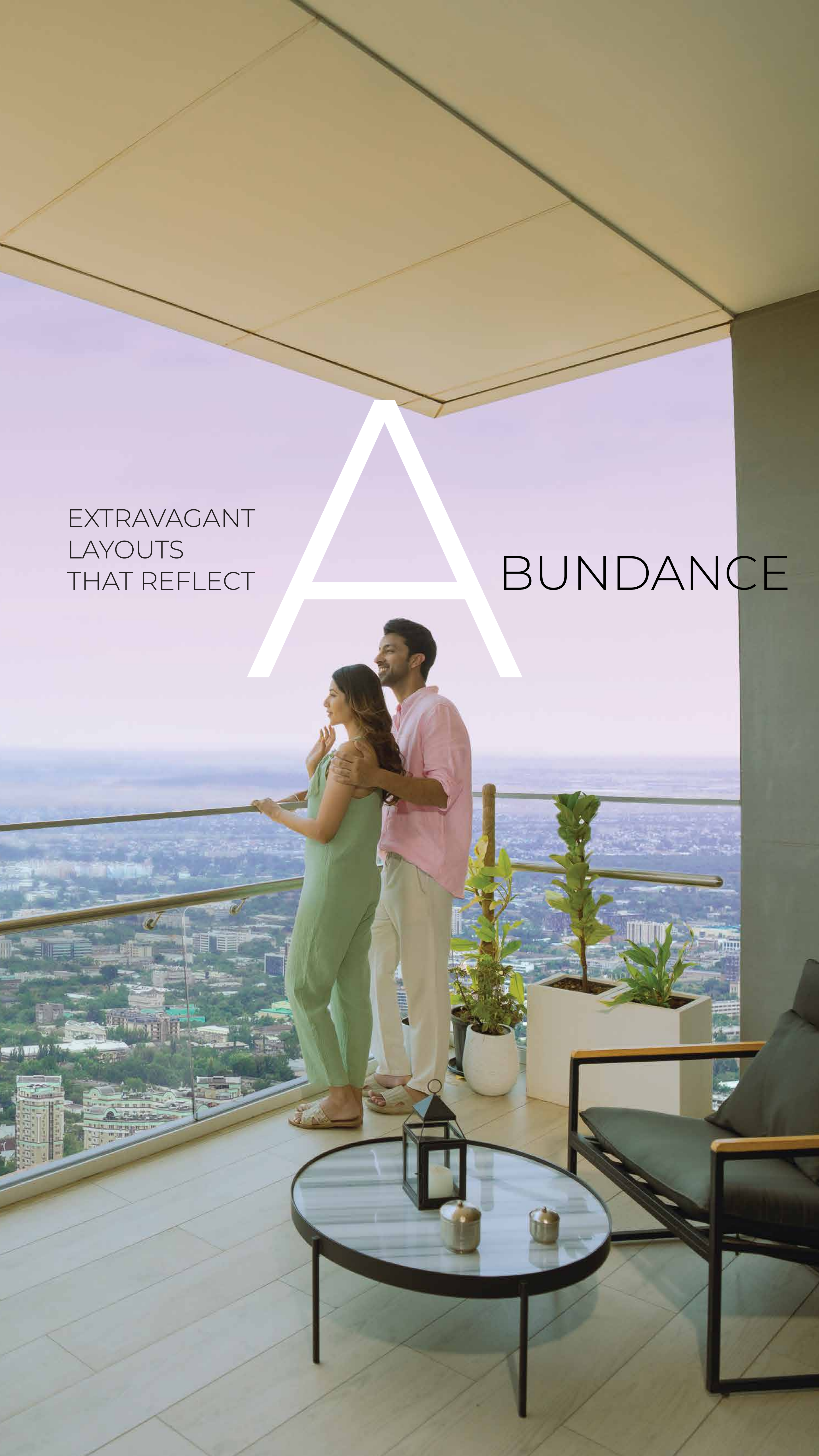
7+ SKY HIGH
LUXURIES



EXTRAVAGANT
LAYOUTS
THAT REFLECT

A

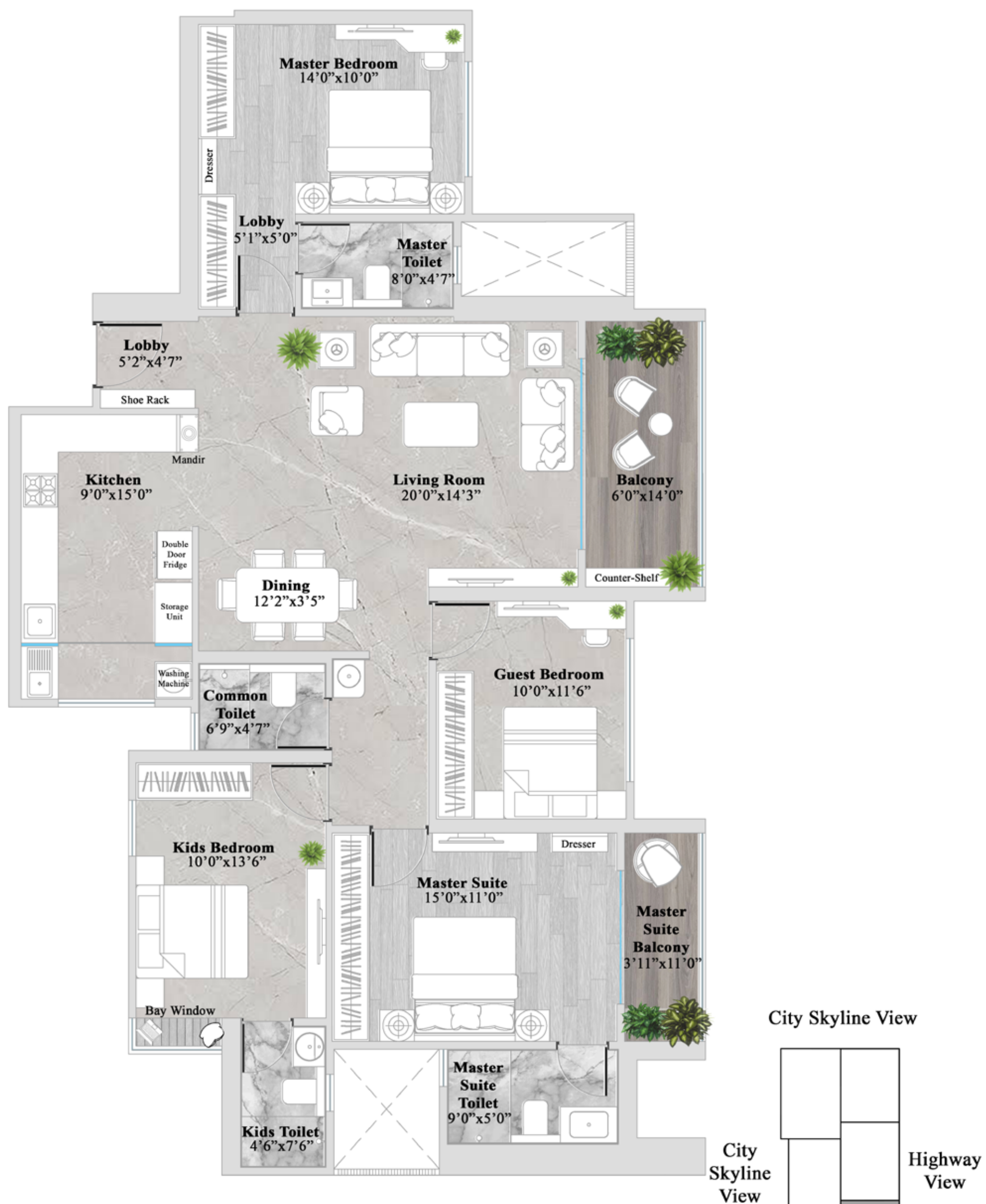
BUNDANCE



4 BHK GRANDE XL UNIT PLAN

Key Highlights

- Master suite with suite toilet and balcony
- Bay window concept in kids bedroom
- Lavish living room with separate dining area
- A 15x9 ft. kitchen with an L-shaped platform
- Provision for full length wardrobe in master bedroom
- Marble finish vitrified tiles in entire apartment



4BHK Grande XL Unit Plan
Carpet Area - 1465 sq.ft.

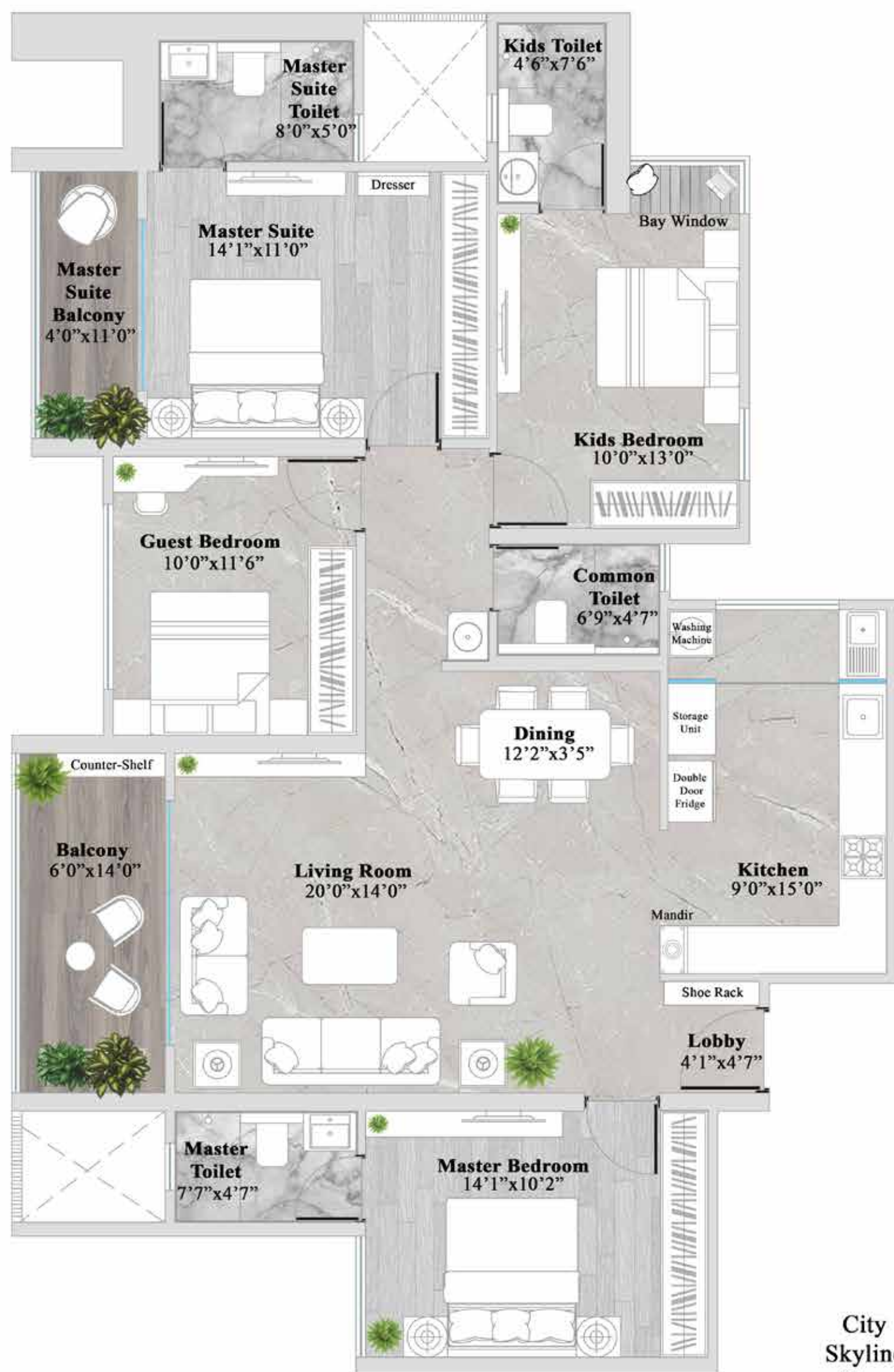
Key Plan



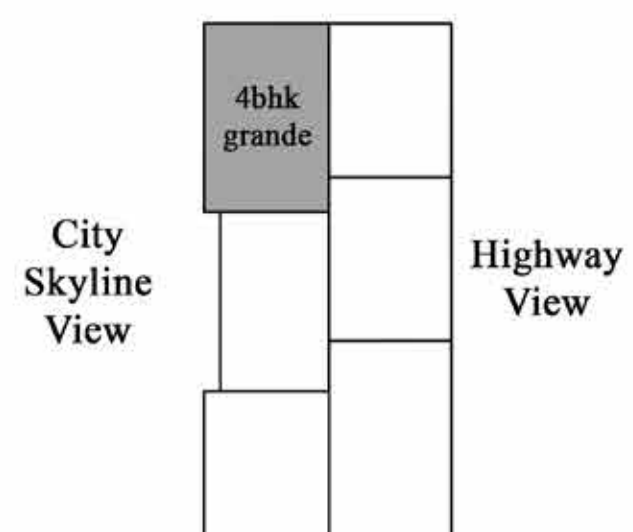
4 BHK GRANDE UNIT PLAN

Key Highlights

- Master suite with suite toilet and balcony
- Bay window concept in kids bedroom
- Lavish living room with separate dining area
- A 15x9 ft. kitchen with an L-shaped platform
- Provision for full length wardrobe in master bedroom
- Marble finish vitrified tiles in entire apartment



City Skyline View



Amenity View

Key Plan

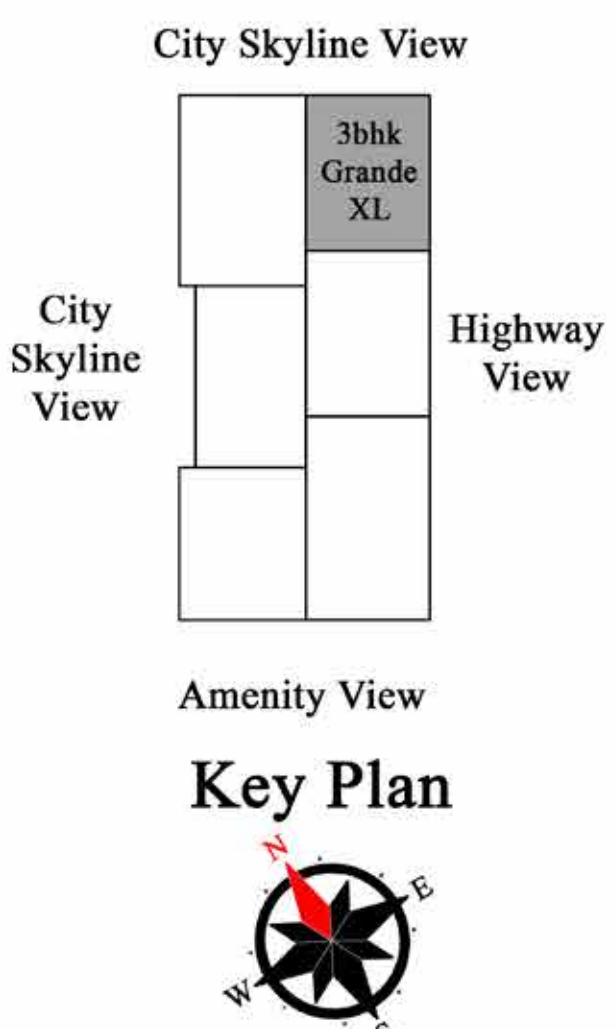
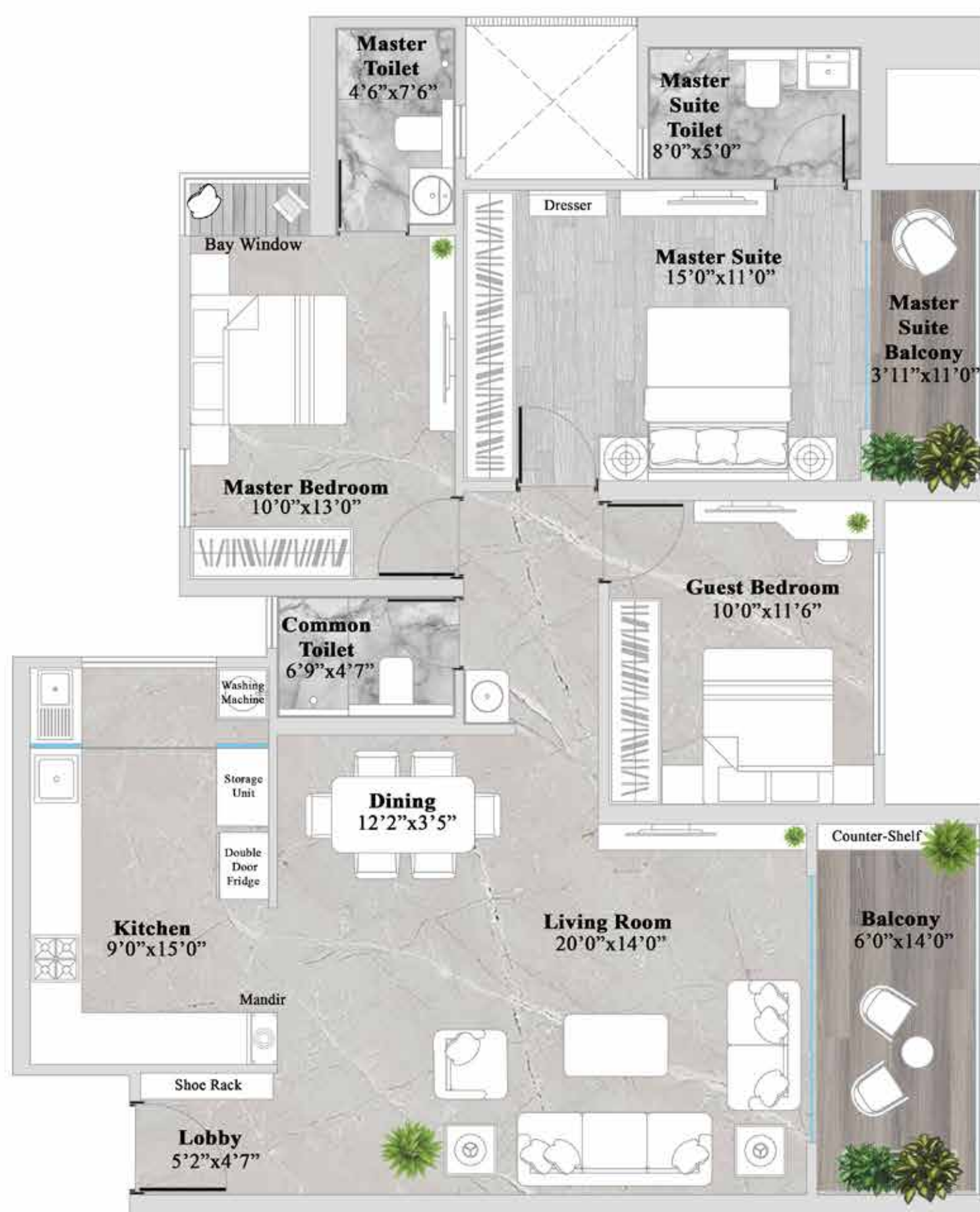


4BHK Grande Unit Plan
Carpet Area - 1423 sq.ft.

3 BHK GRANDE XL UNIT PLAN

Key Highlights

- Master suite with suite toilet and balcony
- Bay window concept in master bedroom
- Lavish living room with separate dining area
- A 15x9 ft. kitchen with an L-shaped platform
- Provision for full length wardrobe in master bedroom
- Marble finish vitrified tiles in entire apartment
- Top notch internal specifications



3BHK Grande XL Unit Plan
Carpet Area - 1241 sq.ft.

3 BHK COMFORT XL UNIT PLAN

Key Highlights

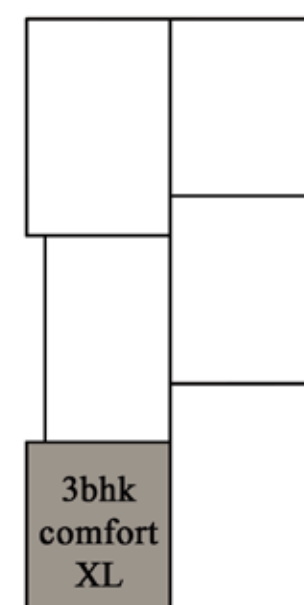
- Master suite with suite toilet and balcony
- Bay window concept in Kids Bedroom
- Lavish living room with separate dining area
- A 13x9 ft. kitchen with an L-shaped platform
- Provision for full length wardrobe in master bedroom
- Marble finish vitrified tiles in entire apartment
- Top notch internal specifications



City Skyline View

City Skyline View

Highway View



Amenity View

Key Plan

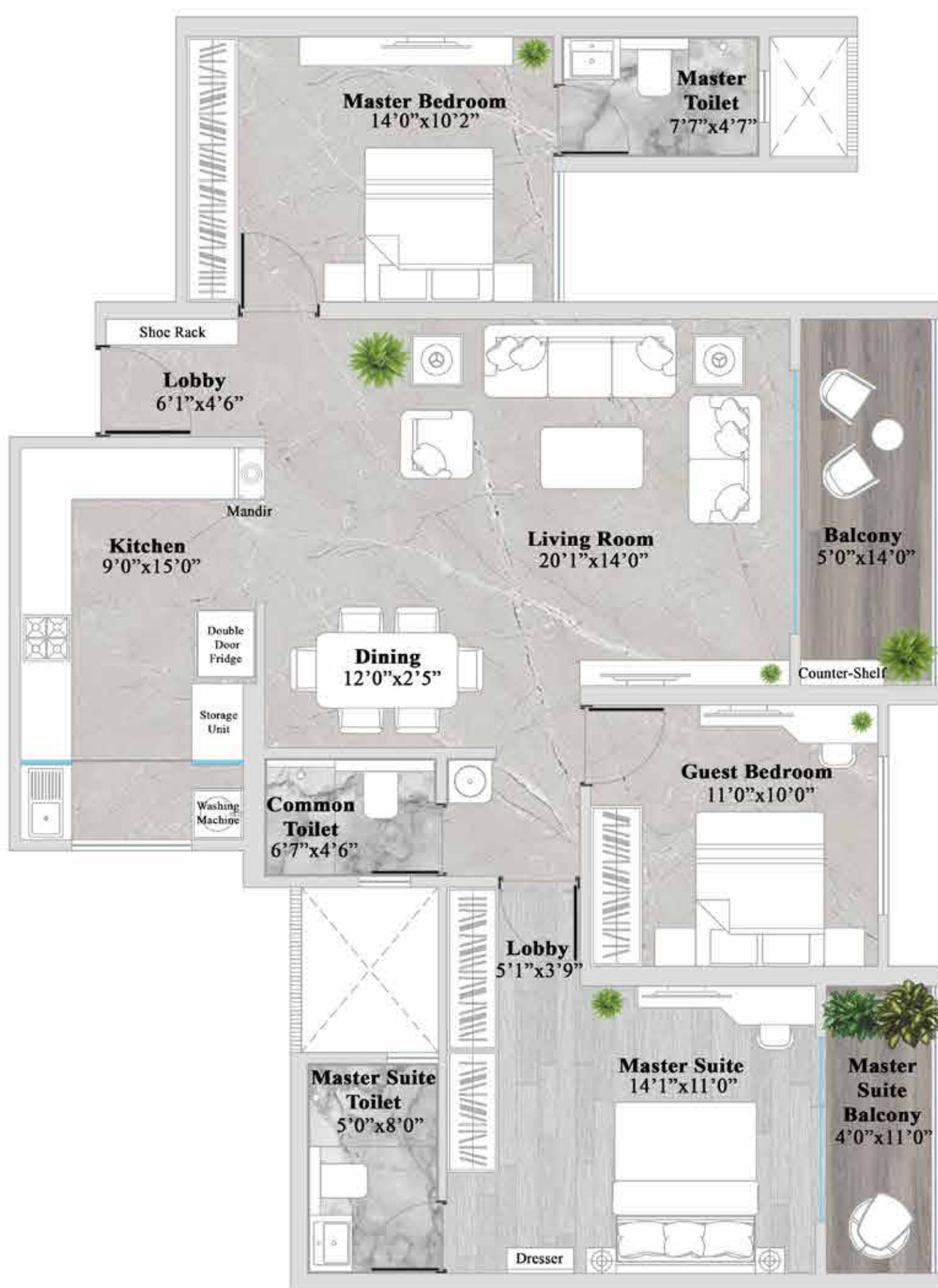


3BHK COMFORT XL Unit Plan
Carpet Area - 1157 sq.ft.

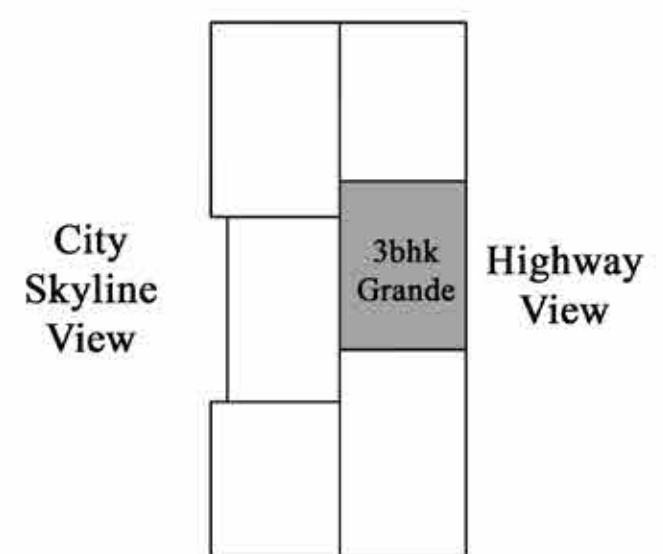
3 BHK GRANDE UNIT PLAN

Key Highlights

- Master suite with suite toilet and balcony
- Lavish living room with separate dining area
- A 15x9 ft. kitchen with an L-shaped platform
- Provision for full length wardrobe in master bedroom
- Marble finish vitrified tiles in entire apartment
- Top notch internal specifications



City Skyline View



Amenity View

Key Plan



3BHK Grande Unit Plan
Carpet Area - 1204 sq.ft.

KEY DISTANCES

WORKSPACES

Upcoming World Trade Center	3 mins
Upcoming IT Park	5 mins
Hinjewadi IT Park	10 mins

EDUCATION

Indira Group of Institutes	1 Min
Dr D.Y. Patil college	1 Min
Akshara International school	3 Min
Euro School	5 Min

HEALTHCARE

Lifepoint Multispeciality Hospital	9 mins
Aditya Birla Memorial Hospital	12 mins
Jupiter Hospital	15 mins
Ruby Hall Clinic, Hinjewadi	17 mins

CONNECTIVITY

Bhumkar Chowk	1 min
Pune- Mumbai Expressway	5 mins
Wakad Metro Station	8 mins
Balewadi High Street	12 mins

KEY AREAS

Wakad	3 mins
Ravet	5 mins
Balewadi	12 mins
Hinjewadi	12 mins
Baner	15 mins
Bavdhan	18 mins
Aundh	20 mins
Kothrud	20 mins

METRO LIFE AWARDED
**THE BEST
MIXED-USE PROJECT**
OF THE YEAR 2020



1000+
RESIDENTIAL
UNITS

30+
HIGH END
SHOWROOMS

150+
RETAIL
SHOPS

7+
ROOFTOP
RESTAURANTS

150+
A-GRADE
OFFICE SPACES



RAMA GROUP™



11
PRESTIGIOUS
AWARDS



50+
PROJECTS
DELIVERED



12
MILLION SQ.FT.
DELIVERED



32+
YEARS OF
EXPERIENCE



12000+
HAPPY FAMILIES



RAMA GROUPTM



Scan to embark on a great journey towards
the greatest location of West Pune.